



DELTA STEWARDSHIP COUNCIL

A California State Agency

980 NINTH STREET, SUITE 1500
SACRAMENTO, CALIFORNIA 95814
DELTACOUNCIL.CA.GOV
(916) 445-5511
Twitter: @DeltaCouncil

2018 California Sea Grant State Fellowship Opportunity

Delta Science Program – **Adaptive Management and Independent Science Board Fellowship Supervisor:** Darcy Austin, Program Manager II (darcy.austin@deltacouncil.ca.gov; (916) 445-0720)

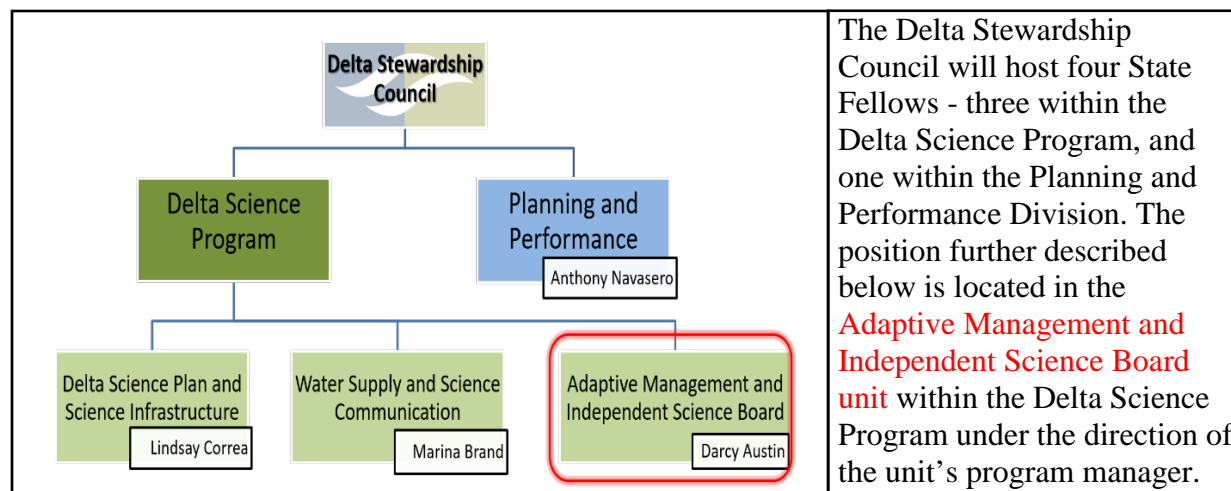
Introduction

Located just minutes from major urban areas, the Sacramento-San Joaquin Delta's meandering waterways spread over 1,160 square miles before flowing into the San Francisco Bay. The Delta is the largest estuary on the West Coast, supplying two-thirds of California's water and providing vital habitat for endangered, endemic, and migratory species such as Chinook salmon and Ridgway's rail. The incumbent for this position has the potential to work at the dynamic interface of land and sea, in a system that is inextricably linked to complex water supply, ecosystem, and policy issues.

Due to the multifaceted nature of this system, the California Legislature enacted the Delta Reform Act, which created the Delta Stewardship Council. The Council's purpose is to uphold the coequal goals for the Delta – a more reliable statewide water supply and a healthy and protected ecosystem, both achieved in a manner that protects and enhances the unique characteristics of the Delta as an evolving place.

The [Delta Science Program](#) (DSP), housed within the Stewardship Council, was established to develop scientific information and syntheses on issues critical for managing the Bay-Delta system. That body of knowledge must be unbiased, relevant, authoritative, integrated across state and federal agencies, and communicated to Bay-Delta decision-makers, agency managers, stakeholders, the scientific community, and the public. The work of the Science Program is guided by the [Delta Science Plan](#), a framework for conducting science that organizes and integrates Delta science activities and builds an open collaborative science community.

Position Description



"Coequal goals" means the two goals of providing a more reliable water supply for California and protecting, restoring, and enhancing the Delta ecosystem. The coequal goals shall be achieved in a manner that protects and enhances the unique cultural, recreational, natural resource, and agricultural values of the Delta as an evolving place."

– CA Water Code §85054

The Fellow will work under the direction of the DSP Adaptive Management and Independent Science Board (AMISB) Unit. The Independent Science Board defines adaptive management as “a science-based structured approach to environmental management. It aids decision-making in the face of uncertainty about outcomes by emphasizing the acquisition and use of new knowledge, experience, and stakeholder input in management of natural resources under changing conditions.”

Restoration Adaptive Management Frameworks

The AMISB works with interagency partners to advise on ecosystem restoration adaptive management frameworks and project- and landscape-level conceptual models. In addition to its advisory role, the AMISB Unit currently provides support for an Interagency Adaptive Management Integration Team (IAMIT) that is developing an ecosystem restoration adaptive management program for [California EcoRestore](#), the initiative to coordinate and advance at least 30,000 acres of critical habitat restoration in the Delta by 2020.

Potential Assignments

- California EcoRestore Adaptive Management Support
 - Carry out recommendations from IAMIT [white paper](#)
- Synthesis of Information - Opportunities will exist to
 - Synthesize information obtained from research and site visits with governmental and non-governmental staff

Independent Science Board

The Delta Independent Science Board (Delta ISB) is comprised of nationally and internationally renowned scientists with backgrounds in ecology, biology, biogeochemistry, geology, and economics and is mandated to provide oversight of the scientific research, monitoring, and assessment programs that support adaptive management of the Delta, including Suisun Marsh. These result in [thematic reviews](#).

Potential Assignments

- Assist Delta ISB on developing thematic reviews on
 - Monitoring Enterprise
 - Restoration
 - Ecosystems
 - Water Supply Reliability
 - Water Quality
- Create outreach and communication materials relating to thematic reviews for distribution to policymakers and other stakeholders