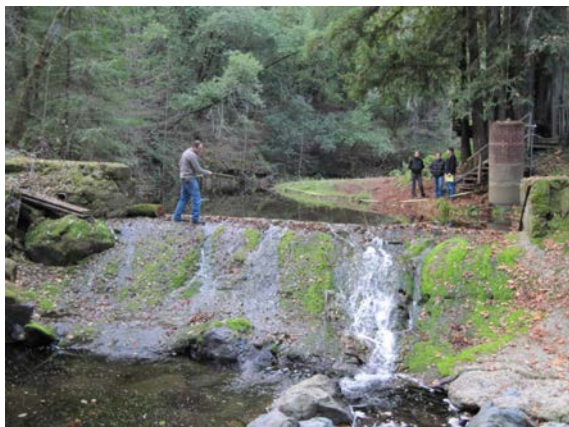


## Mill Creek Dam Fish Passage Project Photos

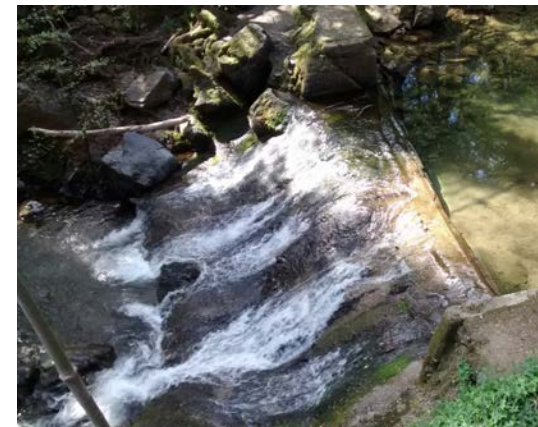
The Mill Creek Dam Fish Passage Project addresses “the highest priority barrier within the Russian River” for coho salmon (NMFS 2012) and restores access to approximately 11.2 miles of high quality habitat (62% of the anadromous stream) in the Mill Creek watershed, a major tributary to Dry Creek and the Russian River and critically important coho salmon and steelhead stream. Trout Unlimited and Prunuske Chatham Inc. implemented the project with funding from the NOAA Restoration Center’s Community-based Restoration Program, the California Department of Fish and Wildlife’s Fisheries Restoration Grant Program, and the Sonoma County Water Agency. The project will be completed in October 2016.



Pre-Project. Mill Creek dam apron



Pre-Project. Top of Mill Creek dam



Pre-Project. Mill Creek Dam from left bank



Pre-Project. Mill Creek dam panorama





June 2016. Pre-Construction partner site meeting



June 2016. Fish relocation



June 2016. Fish relocation



June 2016. Dewatering



June 2016. Installed landowner water system



July 2016. Channel excavation



July 2016. Channel excavation





July 2016. Dam apron removal



August 2016. Main channel shotcrete installation



August 2016. Main channel engineered streambed material installation



August 2016. NOAA tour of project



September 2016. Main channel bed construction



September 2016. Side channel bed construction





September 2016. Prunuske Chatham staff on site



September 2016. Coho art incorporated into the project



September 2016. Side channel inlet weir



September 2016. Water jetting the side channel engineered streambed material



September 2016. Bifurcation island plantings





October 2016. Completing final channel work and erosion control



October 2016. First flows in the side & main channels



October 2016. First flows through side channel



October 2016. First flows

